



The Match

Summer 2018

www.mtef.com



A Milestone Anniversary

2018 MTEF Tennis Ball Offers a Salute to the Roaring '20s

Could there be a more appropriate theme for the 20th Annual MTEF Tennis Ball than Roaring '20s? Especially when the event is being held at the Harvey Davidson Museum's Chrome, 400 W. Canal St., which gives a totally different twist to the meaning of the word *roaring*.

That's what Chair Turquoise Welch-Loera and her organizing committee thought when they sat down to start working out the details for the Ball, to be held Saturday, Oct. 27 starting with cocktails and a silent auction at 6 p.m.

In keeping with the theme, ballgoers are invited to show up dressed in garb of the era.

But whether flapper fancy is your thing or not, the Ball, MTEF's largest fundraiser of the year, will be memorable.

MTEF is excited to note that the MC for the evening will be Doug Russell, sports director and executive director at WTMJ



Photo courtesy Harley Davidson Museum

The Harley Davidson Museum's Chrome will be the venue for the 20th Annual MTEF Tennis Ball

Radio 620 since 2012. Russell, a native of Waukesha North High School and the University of Wisconsin-Oshkosh, has a wide sports media background. He also has been an Emmy nominee and a regional Edward R. Murrow Award winner. He *Continued on Page 10*

An A-pro-priate Occasion: Kids Rub Elbows With the Pros



Junior players from MTEF's High Performance TEAM program and the Town Club got to meet James Blake (from center), a former No.4 singles player in the world and Brandon Currie (front left), a two-time Wisconsin state champion from Brown Deer High School and former Butler university player, during a June 22 clinic at the Town Club in Fox Point. Currie now is the head tennis coach at IUPUI in Indianapolis, IN.

Blake and Currie spoke with the youngsters about the importance of education, goal setting and the life skills that can be learned from playing tennis.

The youngsters also played in an exhibition Jr. Team Tennis match as part of the activities arranged by Town Club Tennis Director Rick Vetter (front right).

The clinic preceded an exhibition match, sponsored by the Al Hurvis/ADAMM Education Foundation, between Blake and Currie at Brown Deer High School.

Inside

2 President's Message 3 TEAM Update 4 Grants and Gifts

5 Become an MTEF Friend 7 Con-GRAD-ulations 9 Meet Our Kids 12 Happenings

Positive Psychology

40 Assets Can Help Youngsters' Development

Psychologist Peter Benson transformed the predominant approach to youth development through his work at the Search Institute, an organization dedicated to the study of child development and success. The Search Institute identified 40 developmental assets that help youth make healthy, caring decisions and protect them from high risk behaviors. This work, known as the 40 Developmental Assets Framework, has guided the world's research on youth development for the past 20 years.



**Elizabeth Horneffer
President's
Message**

The 40 Developmental Assets can be broken down into two categories: external assets and internal assets. External assets are those that center around positive experiences in a young person's life provided by family, supportive people and social sys-

tems in the community. Internal assets are those that focus on individual qualities such as confidence, resilience, and purpose. Internal assets serve as the guidance system to help youth make wise choices and take positive actions.

The results are compelling: the more assets kids have, the better. Youth with high asset levels are less likely to engage in sexual activity, drug use, violence and other high risk behaviors and more likely to engage in helping others, doing well in school and other thriving behaviors. Studies show that while 31-40 assets would be ideal, the average number of assets reported by high school youth is 19.

And that is where I see the Milwaukee Tennis and Education Foundation coming in. MTEF has the programs, the structure and the personnel to add developmental assets to the youth we serve.

Boundaries and expectations are important external assets for children to have, and our summer and year-round programs set

expectations for attendance and behavior, both on and off the courts. Mike Levy, Tina Grubor and our MTEF peer mentors provide a safe environment and the external support that so many students need. Our year-round program keeps students engaged and teaches constructive use of time. Our partnership with the Milwaukee Public Library and tutoring program help students develop a commitment to learning. Our life skills curriculum and mentorship program help students navigate difficult situations and resolve conflicts nonviolently.

If MTEF can add three or four assets to each child, we can make a significant difference in their lives. So rather than focusing on the enormity of problems faced by our central city youth, I encourage you to think of what assets MTEF might add and how you might help us to achieve this goal.

For details on the 40 Developmental Assets, log on to: https://filestore.scouting.org/filestore/pdf/40_Developmental_Assets_Search_Institute.pdf

MTEF Officers and Directors

President: Elizabeth Horneffer
Vice President: Reb Bortz
Treasurer: Christopher Schifano
Secretary: Kurt Janavitz
Assistant Secretary: Kim Kirkpatrick

Directors: Thomas Balistreri, Reb Bortz, Mary Fran Cahill, Judith Coran, Timon Corwin, Sarah Cyganiak, Jeffrey Davis, William Davis, Donna Drosner, Trevor D'Souza, Louis Gral, Herbert Hentzen, Elizabeth Horneffer, Kurt Janavitz, John Kendler, Charles Mulcahy, Thomas O'Byrne, Frank Parker, David Pelisek, Denny Schackter, Christopher Schifano, Michael Sperling, Rajit Saluja, Carl Trimble, Frank Thometz, Joanne Williams

Past Presidents
 Charles Mulcahy (1975-2006)
 David Pelisek (2006-2008)
 Thomas O'Byrne (2008-2010)
 Trevor D'Souza (2010-2012)
 Michael Sperling (2012-2014)
 Timon Corwin (2014-2016)

Advisory Board
 John Austin, William Henk,
 Daniel O'Brien

MTEF Staff

Executive Director: Michael Levy, Sr.
Program Director: Tina Grubor
Controller: Barbara Franzen

Remember When...



...Wisconsin's First Lady Visited MTEF?

August 9, 2007 was a special day for MTEF summer campers when Jessica Doyle, wife of then-Gov. Jim Doyle, visited the Sherman Park site. Here, she asked Cameron Green about his experiences with MTEF. Monica Thomas, then MTEF's TEAM director, held a box of books Doyle, a long-time teacher, donated for the summer reading program.

Doyle spent around an hour observing MTEF programming, talking with the participants, staff and the board members who attended. She also helped the youngsters select books to read and spent time reading with them.

All Set for Summer!

MTEF Tennis Camps Follow Up On Successful Fall-Winter Programs

With summer winds once again blowing across Wisconsin, MTEF's TEAM programming has geared up for its 2018 six-week summer camp season.

As in previous years, youngsters are gathering at several sites spread across the city for not only tennis instruction but also segments on life skills, academics and nutrition/fitness.

High Performance TEAM is being offered as an all-day camp at Milwaukee's Merrill Park, 461 N. 35th St. Participants must be at least intermediate level players to enroll at Merrill.

Half-day programming for beginner to intermediate players is taking place at Rufus King High School, 1800 W. Olive St. and Brown Deer High School, 8060 N. 60th St. Programming in Brown Deer is conducted in cooperation with the Brown Deer Parks and Recreation Department.

A partnership with Midwest Youth Team Tennis is allowing MTEF to bring a new pilot 10 & Under tennis program back to Sherman Park, 3000 N. Sherman Blvd. This programming involves participants from two Milwaukee College Prep schools in the Sherman Park community. MTEF also is consinuting to support Mary Ryan Boys & Girls Club summer campers with 10 & Under play days/Team Challenges.

MTEF is continuing its partnership with Summit Educational Association by offering tennis instruction to its participants at Kosciuszko Park, 2201 S. 7th St. and Dineen Park, 6109 W. Vienna Ave. Funding for this partnership is supported by the Al Hurvis/ADAMM Education Foundation.

As it has for several years, MTEF once again is joining forces with the Milwaukee Public Library's Super Reader program. The library brings bins of age-appropriate books to MTEF sites within



Tom Lynn

Concentration counts when it comes to connecting your racquet to the ball. That's one lesson this girl learned during MTEF's six-week summer camp in 2017.

Milwaukee and youngsters who complete the required reading are rewarded with a book to take home at the end of the season.

The summer camp programming follows a successful fall/winter season that included HP TEAM's weekly Pizza Wednesdays, FUNDamental Fridays, JTT Saturdays and SERVing Sundays.

This past year saw more engagement by HP TEAM participants in STEM (science, technology, engineering and math) projects, active video learning modules and peer-to-peer mentoring. The year-round program ended June 6 with a parent meeting at Mary Ryan.

As part of MTEF's expanded mentoring program (EMP), high performance participants attended Kids Day at the ITA Division 1 National Women's Indoor Championships at the Nielsen Tennis Center in Madison in February.

Watching the action was lots of fun but another big highlight was getting to meet Bucky Badger, mascot of the University of Wisconsin, which hosted the event.

Women's tennis teams from 16 universities, including UW, competed in action at the Nielsen Tennis Center. North Carolina defeated Pepperdine for the title.

As part of the Milwaukee Bucks and Milwaukee Brewers outreach programs, the youngsters also attended two professional basketball events and, more recently, two baseball games.

"These are all products of partnerships with the Milwaukee Bucks and the Milwaukee Brewers organizations," said Mike Levy, MTEF's executive director. "We are genuinely grateful that our mentoring mission aligns beautifully with these fine corporate partners."

During the school year, MTEF again contracted with the Milwaukee Public Schools to bring after-school tennis instruction to MPS' recreation department CLCs. Tennis instruction also was provided at St. Marcus Lutheran School and Milwaukee College Prep, whose teams squared off in a season-ending rally on May 7. (See story on Page 4.)



For these youngsters, a photo op with Bucky Badger was a highlight of a field trip to the ITA Division 1 National Indoor Women's Championships in Madison.

Up to the Challenge



St. Marcus, Milwaukee College Prep Face Off in Team Play

On May 7 two schools from Milwaukee's North Side – St. Marcus Lutheran, 2215 N. Palmer St. and Milwaukee College Prep-Lola Rowe North, 1350 W. North Ave. — came together to break bread and enjoy some fun tennis competition.

For the youngsters involved, the Team Challenge was the culmination of MTEF's six-week SML-MCP Spring Tennis outreach program, which has been conducted at the schools for the last three years.

The program serves two key purposes toward capacity building in the city of Milwaukee. First, it provides an opportunity to explore interest in interschool tennis league play with MCP partner campuses and St. Marcus Lutheran; second, it offers an introduction to the MTEF Summer TEAM program. (To date, MTEF has received a total of 16 summer youth participants via scholarships offered by the schools.)

The Team Challenge is a USTA Net Generation branded tournament or Play Day which allows youngsters to get together and simply have fun competing in 60 minutes of modified match play.

From Star Catcher to Up-and-Down the River match rotation games, the goal of this event is to keep the youngsters having fun playing matches.

The SML-MCP matchup ended with Star Catcher. The objective of the game is to earn as many cones for your team as possible in a set amount of time. Cones are earned by winning the best of three points against an opponent. With one-minute remaining in a 15-minute session, the schools were tied at 20-cones each. In the end, Milwaukee College Prep came on strong and won 28-20.

Grants and Gifts

Grants

Robert W. Baird Foundation
Fidelity Charitable Gift Fund
Greater Milwaukee Foundation
Herb Kohl Philanthropies
Al Hurvis/ADAMM Education Foundation
Krause Family Foundation
Milwaukee Public Schools
Modern Woodman
Stackner Family Foundation
United Way of Greater Chicago
USTA
Midwest Youth & Tennis Foundation
Merrick and Barbara Wells
Modern Woodmen
Wells Fargo Community Support Campaign
Wisconsin Tennis Association
Ziegler Family Foundation

Individual

John Beck
Deborah Burgess
John and Julie Cavaniss
James and Penelope Deshur
Gretchen Durkin
Kristyn Harrell
Joe Horning
Marjorie Kozlowski
Angela Orentas
Bruce and Mary Pindyck

Robert and Judy Scott
Brian Sikorski
Roger and Beth Stafford
Janine Sullivan
Trimble Family Foundation
United Way of Greater Milwaukee
Aaron Zavadsky
Giving Tuesday
Brad and Glenna Brin
Timon and Rachel Corwin
Sarah Cyganiak
Mark and Elizabeth Horneffer
Dennis Korjenek
Michael Levy
Denny Schackter and Patti Lock

Friends Campaign

Joy Albi
Mary Fran Cahill and Herb Hentzen
David and Judith Corwin
Anwer Dhala and Ma Teresa
Candace Eastern-Walz
Daniel and Jean Gilman
Jack and Donna Hill
Kurt Janavitz
Bill and Christie Krugler
Steven and Lisa Lyons
Todd and Linda Mackay
Larry and Vicki Martin
Judith Neal

Mark and Mary Ann Picard
Frank and Gertrude Pietcher
John Schneider & Associates
Susan Schnoll
Mark Styles, Ltd.
Frank and Kathleen Thometz
Rick Vetter
David and Cindy Werner
Michael Woods

Spring Appeal

Anonymous
Ray and Emily Ballecer
Ron and Kristy Brooks
Rita Burns
Mary Fran Cahill and Herb Hentzen
Tom and Frankie Carswell
Sarah Cyganiak
Ken Harris
Mark and Elizabeth Horneffer
John and Martha Kendler
Todd and Linda Mackay
Christina Mendez
Frank and Lynn Parker
Sally Quillan
Tom and Trudi Roesch
Denny Schackter and Patti Lock
Greg and Jodi Wait

Be a Friend, Donate Now!



Tom Lynn Photos

Over the past 17 years, MTEF's programming has touched the lives of more than 40,000 underserved Milwaukee youngsters with tennis instruction plus academics, life skills and fitness/ nutrition education.

In 2015 the USTA Foundation designated MTEF as a 4-Star NJTL chapter – one of only 19 out of more than 400 in the entire United States. It also received 4 stars in 2009 and 2010, when the life-skills curriculum – later incorporated into NJTL – was known as First Serve. MTEF was recognized as the National NJTL Chapter of the Year in 2006 and the Midwest NJTL Chapter of the Year in 2004, 2005 and 2009. It was named the national No. 2 First Serve chapter in 2010.

But MTEF, like all non-profit organizations, needs the generosity of Friends like you to sustain and grow its programming. You can make a *huge* difference in a child's life with even a small donation that you may designate for a specific intention. Friends will be recognized in the fall issue of The Match. Here are some ways you can help:

Sponsorships

TEAM Programming

- Merrill Park
- Rufus King
- Sherman Park
- HP TEAM
- Build Funding for Future Site

Newsletter

Tutors and Tennis Instructors

- Tutors
- Tennis Instructors

Area of Greatest Need

Please use my donation where it is most needed.

Volunteers

Office Assistance

- IT/Website
- Data Input/Analysis
- Help Prepare Mailings
- Research Sources for Funding
- Mentor

Other

Tutor or Tennis Instructor

To Donate Now

Make your choice(s) from the list above, fill in the information below and mail this page to:

MTEF, Attn: Mike Levy, 3000 N. Sherman Blvd., Milwaukee, WI 53210. Make checks payable to MTEF.

Name: _____ Phone: _____ Amount _____
Address _____ City: _____
State _____ ZIP code: _____ Email: _____
Credit Card: MasterCard Visa
Number: _____ Expiry: ____/____ Validation: _____ Signature _____

Or log onto www.mtef.com and click on *Donate* or *Get Involved*. Donations are fully tax-deductible.



I wish I may, I wish I might, have the wish I wish tonight. We all remember those words from childhood. No matter what our age, we all have wishes and dreams and so does MTEF. The foundation currently is in need of additional laptop computers, new or used, since our tutors use them in working one-on-one with TEAM participants.

We also could use digital cameras and an iPad to record our participants progress.

Monetary donations also are helpful, especially to MTEF's High Performance TEAM participants engaged in the National Student Athlete Competition (NSAC), where points are earned for tournaments played and won. No donation is too small as several can be combined to cover costs for a deserving child.

Some examples of the costs are:

- \$20 provides a child with a USTA junior membership.
- \$35 pays the entry fee for a child to play in a rookie tournament.

- \$65 enables a child to enter a USTA-sanctioned junior tournament.

• \$100 provides for six hours of indoor court time at Moorland Tennis and Pickleball Club in New Berlin or North Shore Elite in Glendale.

- \$125 provides entry fees for two USTA-sanctioned tournaments

- \$250 covers the cost of three weeks of tennis for a child in MTEF's Summer TEAM program.

You can double the impact of your donation if your employer provides matching gifts. Some companies with such programs are:

Abbot Funds	Benevity	Kimberly Clark Foundation	UBS
Aetna Foundations	BlackRock	Kraft	United Health Group
Alliant Energy Foundation	BMO Harris	Market Corp.	UPS Foundation
Allstate	Brady Corp.	McDonald's	U.S. Bank
Altria	C&H Distributors	Merrill Lynch & Co.	U.S. Cellular
Amazon	Caterpillar	Microsoft	Verizon
American Express	CIGNA	Morgan Stanley	Wells Fargo
Amerian Transmission Co.	Citi Foundation	Motorola Solutions Foundation	WE Energies
AON Foundation	CNA Foundation	Northwestern Mutual (Retirees)	WellPoint Foundation
Apple	Cooper Industries	Pieper Power	Windhover Foundation
Arch	DCP Midstream	PPG Industries	Woodlands Academy,
Artisan Partners	Dell	Prudential Foundation	W.W. Grainger
Assurant Health Foundation	Eaton Corp.	Quad/Graphics	
AT&T	Exxon Mobil	Razoo Foundation	Annual Giving Campaigns
Aurora Health Care Partnership	FM GLocal Foundation	Rexnord Foundation	Allstate
Automatic Data Processing	General Electric (all subsidiaries)	Rockwell Automation	AT&T
Aventis	General Mills Foundation	Russell Investments	Give With Liberty
AXA	Google	Safeco	Morgan Stanley
Bank of America	Great West Life & Annuity Insurance	Society Insurance	Network for Good
Barnes Group Foundation	IBM	SPA Corp. Foundation	The Giving Program Center
Baxter International Foundation	Illinois Tool Works	Sunstrand Corp. Foundation	Truist Giving Campaign
Bearing Point Foundation	Johnson Controls	Takeda	United Way
Bemus Co. Foundation	JP Morgan Chase	Thomas Reuters	

Make checks payable to MTEF or log onto mtef.com and click on "Donate."

Remember MTEF in Your Will and Estate Planning

Carry on your family legacy,
love for children
and the lifelong game of tennis
through MTEF
by including the foundation
in your will and estate planning.

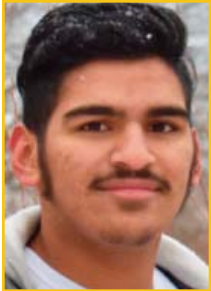
To learn more,
contact your financial advisor
or call the MTEF office, (414) 442-8195.



Con-GRAD-ulations

Board members and other adults associated with MTEF have an opportunity to watch our participants grow from children to young adults, so it's not surprising that we explode with pride at their accomplishments.

In this issue of *The Match* we are saluting four young men and women, some of whom have been in MTEF for most of their lives, who recently graduated from high school and soon will be off to college to pursue their career dreams.



Idris Badani

Age: 18

High School: Eastbrook Academy

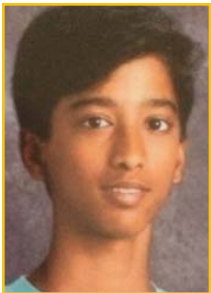
College: MATC

Major: Culinary Arts

On MTEF: I have been a part of the MTEF family for [nine years] and I enjoyed every bit of it.

Because of this program, I learned and then strengthened my tennis game. MTEF also taught me life skills which I utilize every day. And I made many friends who I will remember for years to come.

Thank you for all the wonderful moments.



Shadaab Bhamla

Age: 18

High School: Milwaukee Hamilton

College: Marquette University

Major: Computer Engineering

On MTEF: I have been a part of MTEF for about a year. The program is really helpful as it not only made me a better tennis player, but also it helped me with my education.

I really like MTEF because they don't only focus on tennis but the aspects that go with tennis, such as mental health. MTEF also helped me with their mentoring program, where I learned how to be a leader as students were dependent on me.



Camille Cruise

Age: 18

High School: Prairie School

College: Northwestern University

Major: Human Development and Psychological Services

On MTEF: The Milwaukee Tennis and Education Foundation has been part of my life for almost 11 years or, 11/17 of my life.

Through it, I've met some of my closest friends and learned how to play the world's greatest sport.

One of the best aspects of my experiences with MTEF is in the amount of support that I received from various coaches, tutors, and teammates.

I was always encouraged and supported to pursue my dreams. From the time that I would imagine myself as a prima ballerina at the Milwaukee Ballet School to the period of time that I envi-

sioned myself becoming a teacher. I remember the tennis coach that came to see me perform in the Milwaukee Ballet's Nutcracker and the tutors that would let me teach them the lessons that I learned in school. I can't help but be grateful.

I didn't realize how important that support was when I was younger, but as I think about my desire and ability to pursue my current dream of studying the brain and taking that into pediatrics, I feel capable. Having my dreams and effort validated and recognized by people outside of my family only further bolstered the confidence I have in the ability to achieve my goals.



Elijah Johnson

Age: 18

High School: Shorewood

College: Tennessee State or Ball State

Major: Sports Marketing

On MTEF: MTEF became a huge experience for me growing up. I was 7 years old when I started playing tennis at Sherman Park in their summer program.

This is where MTEF recognized me for my work ethic. I was invited to be a part of the fall High Performance TEAM and I accepted. I played tennis during the school year and each summer through middle school. I truly began to love the game, appreciate the staff and looked forward to practice and competitions. Meeting, talking with and playing with semi- and professional players kept me excited about the sport. Playing in MTEF sincerely made an impact on my life from the coaches telling me how well I play and teaching me ways to get better, to the drive I have for excellence and doing my best in all things. I am thankful to MTEF for the tennis and educational experiences I received.

Grade and Middle School Graduates

MTEF also wishes to Con-GRAD-ulate the following participants who will start high school in the fall.

Nathaniel Lynn, *Longfellow Middle School*, Marquette University High School.

TaDarion Perkins, *Rufus King Middle School*, Dominican High School.

Jailyn Powell, *Our Redeemer Lutheran School*, Martin Luther High School.

Brielle Wade, *Wedgewood Park Middle School*, Rufus King High School.

Kennedy Young, *Wedgewood Park Middle School*, Rufus King High School.



Tom Lynn

Participants and staff gathered for a photo at the 2017 MTEF/NJTL Regional Rally at Merrill Park.

Regional Rally Hits the Courts on July 27

Summer wouldn't be summer without the MTEF/NJTL Regional Rally, which brings youngsters from the Greater Milwaukee area and beyond for an afternoon of tennis instruction, games for prizes, off-court activities and more.

This year's event will be held from 1-3 p.m. Friday, July 27 at Milwaukee's Merrill Park, 461 N. 35th St.

A summer staple since 2002, it traditionally draws up to 250 participants, each of whom receives a commemorative T-shirt.

The rally is free and open to children of all ages and ability levels.

For more information, call (414) 442-8195 or email mtefstaff@gmail.com.

Board Notes



Kendler



Bradley



Means



Posnanski



Trimble

John Kendler was elected to the MTEF board of directors at its Feb. 8 meeting.

Kendler recently retired after 28 years of experience with GE Healthcare, primarily in business strategy, customer service and marketing.

The Kendlers have been a tennis family for many years, going back to when their son, Tyler – now a senior at UW-Madison – fell in love with the sport as an 8 or 9 year old.

The family became acquainted with MTEF in 2010 when their daughter Alison became part of the academic tutoring team.

Kendler's wife Martha served on the Tennis Ball committee for four years (2012-2015) and she, along with Alison and Tyler, has tutored MTEF's High Performance TEAM participants. Tyler also has served as a coach for HP TEAM.

Kendler says he has a passion for giving back is the community which has given him and his family so much.

As part of his board duties, he will serve as a member of the policy and oversight committee.

Kendler graduated from North Carolina State University in 1983 with a BA in economics and business. He earned an MBA from the Franklin W. Olin Graduate School of Business at Babson College in 1988.

Four directors – Rebecca Bradley, Demond Means, Timothy Posnanski and Carl Trimble – have resigned from the MTEF board.

Means, who was superintendent of the Mequon-Thiensville School District when he joined the board in 2014, did not stand for re-election after becoming superintendent of schools for the Clarke County School District in Athens, GA..

Bradley, Posnanski and Trimble cited job conflicts and time constraints in their resignation letters. They joined the board in 2011, 2013 and 2012 respectively. Trimble will continue to serve on MTEF's development committee.

MTEF thanks all of them for their years of dedicated service

MEET OUR KIDS



Samiyah Braylock

15 years old

Years in MTEF: 6

School: Pius XI High School

Grade: 9th

Favorite Teacher: Dave Scher

Favorite Activities: Tennis, Chilling with friends

Favorite Sport: Tennis

Favorite Color: Blue

Favorite Food: Nachos/Pizza

Favorite TV Show: *On My Block*

Favorite Movie: *Love & Basketball*

Samiyah played No. 2 doubles on her high school varsity team as a freshman. Her favorite part of high school tennis was bonding with her doubles partner. Her favorite memory was her last match at sectionals.

She enjoys Wednesdays with MTEF, where everyone comes together for mentoring. She also likes that MTEF is not just concerned with tennis but also includes tutoring.

Samiyah enjoys playing Jr. Team Tennis and tournament play.

After an absence in several issues, we are bringing back *Meet Our Kids*, which profiles several of the youngsters involved in our TEAM (Tennis, Education and Mentoring) programming. These four outstanding young people have been participating in High Performance TEAM for several years.

Antwan Williams

12 years old

Years with MTEF: 5

School: Lake Bluff Middle

Grade: 6th

Favorite Teacher: Mrs. Berman

Favorite Activities: Listening to music

Favorite Music Artists: Chris Brown & Bazzi

Favorite Sport: Tennis

Favorite Colors: Blue and purple

Favorite Food: Stuffed meatballs

Favorite TV Show: *13 Reasons Why*

Favorite Actor: Tyler Perry

Antwan likes playing Jr. Team Tennis on Wednesdays in the summer because he gets to travel to different sites around the city. He has played in three tournaments and, most recently, won first place in the MTEF Cup 12-and-under division.



Izayah Briggs

13 years old

Years with MTEF: 5

School: Golda Meir Middle

Grade: 7th

Favorite Teacher: Jinna Lusty

Favorite Activities: Sleeping

Favorite Sport: Tennis

Favorite Color: Red

Favorite Food: Literally anything

Favorite TV Show: *The Office*

Favorite Movie: *Lion King*

Izayah thinks MTEF provides him with a great opportunity not only to learn how to play tennis and get tutoring help but also an outlet to expand friend groups, learn about cultures and create relationships that can last for a lifetime.

Marissa Jones

11 years old

Years with MTEF: 4

School: Glen Hills Middle School

Grade: 5th/6th

Favorite Subject: Math

Favorite Teacher: Homeroom teacher

Favorite Activities: Track/Gym

Favorite Sport: Tennis

Favorite Color: Rose Gold

Favorite Food: Chili

Favorite TV Show: *Stranger Things*

Favorite Movie: *Black Panther*

Marissa's favorite part of the program is the mentoring. She has played in two tournaments and looks forward to playing high school tennis in the future.

Marissa would like to be an architect when she grows up.





Gary Porter

Mike Levy, tournament director, and Izayah Briggs, are shown at last year's TEAM Cup awards ceremony.

TEAM Cup Tourney Kicks Off on July 30

There's nothing like tradition and, as it has for the last 11 years, MTEF's summer season will end with its TEAM Cup tournament at Milwaukee's Merrill Park, 461 N. 35th St.

This year's four-day event will start with preliminary matches on July 30 and the eventual champions will receive their trophies and medals at an 11:30 a.m. awards ceremony on August 2.

The TEAM Cup competition offers youngsters a chance to compete on the court against peers from not only MTEF but also from other tennis programs in surrounding Milwaukee neighborhoods.

In addition to girls and boys divisions, youngsters engage in play by age group – from 10s to 18s.

Registration is \$20 per person and free for participants of MTEF and Milwaukee Public Schools programs. All entries are due by 5 p.m. on Thursday, July 26.

For more information, contact the tournament director, Mike Levy, at (414) 731-5637 or email him at mlevy@mtef.com.

The tournament is presented by the Milwaukee Public Schools Division of Recreation and Community Services and sponsored by MTEF.

Quadraccis Sign on as Premier Match Sponsors, Doug Russell as MC

From Page 1 has covered many major events, including the Davis Cup and US Open, five Super Bowls, the Final Four, Rose Bowls and the World Series.



Russell

The evening also will feature a multi-course gourmet dinner, a live auction, a wine pull, music and more. As the date draws near, further details will be provided on the MTEF website and in email messages.

Zina Garrison, whom MTEF had previously announced as the honorary chair, was forced to bow out of the role because of an unforeseen scheduling conflict.

Garrison said in an email that she deeply regrets not being able to help with this year's event and hopes to be able to make it in the future.

A new honorary chair will be named in the next few weeks.

The Premier Match Sponsors of the Tennis Ball, with a generous and much appreciated \$10,000 donation, are Caran and Joel Quadracci.

Additional corporate and individual sponsorships are available in amounts ranging from \$5,000 to \$500. Single tickets are \$125.



Joel and Caran Quadracci

Online registration for tickets and sponsorships is available at <https://mtef.ejoinme.org/tennisball>.

The goal for 2018 is 300 attendees and \$130,000 profit.

Your support can help to make it happen!



Mary Fran Cahill

Ryan Vento (from left), Sungwan Yoon, Eunsook Lee and Maria Vento enjoyed cocktails and conversation at the 2017 MTEF Tennis Ball.

Johnson Shows Game At State

For the second consecutive year, MTEF was represented in the WIAA Boys' Individual Tennis Tournament at the University of Wisconsin's Nielsen Tennis Stadium in Madison.

Last year, Sydan Parker and his Homestead High School doubles partner Tucker Gabriel played as the No. 5 seed in their event.

This year, Elijah Johnson, Shorewood High School's No. 1 singles player, earned a D2 berth with a 9-13 regular season record as a senior.

Johnson has been a participant in MTEF's TEAM program since 2007, starting as a beginner and progressing through the ranks of High PerformanceTEAM.

He defeated Connor Baberjee, a senior at Ripon High School, in the first round 6-4, 6-3 before falling to No. 3 seed Daniel Taleghani, a sophomore at University School of Milwaukee, 6-3, 6-1 in the second.

"Congratulations to Elijah! He has trained hard for many years and it is quite an accomplishment to qualify for the state tournament and win a round," said MTEF President Beth Horneffer. "The MTEF family is extremely proud of Elijah and we are grateful for the example he sets on the court for younger players."



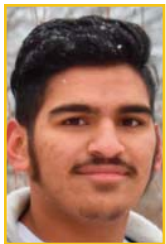
Elijah Johnson outside the University of Wisconsin's Nielsen Tennis Stadium in Madison.

Cruise Wins USTA Scholarship

Camille Cruise, who will be attending Northwestern University in the fall received the Richard Bradley Scholarship from the USTA Midwest section to help with expenses.

She plans to major in Human Development and Psychological Services and eventually to specialize in pediatric medicine.

Eight TEAM Participants Return as Summer Instructors



Badani



C. Cruise



T. Cruise



Johnson



Loera



Parker



Rheams



Whitley

If you need proof that MTEF's programming produces young adults who think it's good to give back, here's proof.

Eight former and longtime TEAM participants will spend the summer as instructors for the program that gave each of them their start in tennis and taught them the life skills needed as caring, engaged, productive individuals.

They are Idris Badani, Camille and Toussaint Cruise, Elijah Johnson, Julian Loera, Sydan Parker, Julian Rheams and Levi Whitley. Most, if not all, spent the greater part of their childhoods with MTEF.

Badani is a tennis instructor at Dineen Park, one of MTEF's partner sites with Summit Educational Association.

Camille Cruise is teaching nutrition/fitness and her brother, Toussaint, is a tennis instructor at Merrill Park, MTEF's High Per-

formance Academy site. Parker is serving as the assistant site director there under Mike Levy, MTEF's executive/tennis director.

Loera is serving as site director for MTEF's half-day programs at Brown Deer and Rufus King high schools, where Johnson and Rheams are tennis instructors.

Whitley is assigned to Sherman Park, where he is helping with this summer's new USTA 10 & Under pilot program.

"We are thrilled to have eight former MTEF participants working in our summer program," said MTEF President Elizabeth Horneffer. "Not only are they great tennis instructors, but they understand the importance that MTEF places on academics and life skills. They exemplify so many of the qualities MTEF tries to instill — respect, community, giving back—and serve as great role models for our younger students. We are lucky to have them!"

Milwaukee Tennis & Education Foundation
Attn: Michael Levy, Sr.
3000 N. Sherman Blvd.
Milwaukee, WI 53210

Happenings

Subject to Change

- June 9:** TEAM Volunteers Orientation. Mary Ryan Boys & Girls Club. 3 -4 p.m.
- June 18:** Summer TEAM program begins. Multiple sites.
- June 20:** USTA Jr. Team Tennis begins. Runs through August 6.
- June 22:** Hurvis/ADAMM James Blake Exhibition. Novak Field House, 8200 N. 60th St., Brown Deer. 4 - 9 p.m.
- June 25:** NJTL Essay Contest entries deadline.
- July 27:** 15th Annual NJTL Kids Day Regional Rally. Merrill Park. 1 - 3 p.m.
- July 30-31:** MTEF TEAM Cup Junior Tournament Early Rounds. Merrill Park, 461 N. 35th St. All day.
- August 1-2:** MTEF TEAM Cup Orange Ball and Junior finals Merrill Park. 9 a.m. followed by awards ceremony and picnic.
- Sept. 28** Fall HP TEAM program begins. Helfaer Tennis & Recreation Center, 525 N. 16th St.
- Oct. 13:** Fall USTA Jr. Team Tennis begins. Moorland Tennis and Pickleball Club, 2900 S. 163rd St., New Berlin.
- Oct. 27:** 19th Annual MTEF Tennis Ball. Harley Davidson Museum-Chrome, 400 W. Canal St. 6 p.m. - midnight

For more information, please check our website,
www.mtef.com

Follow us on

